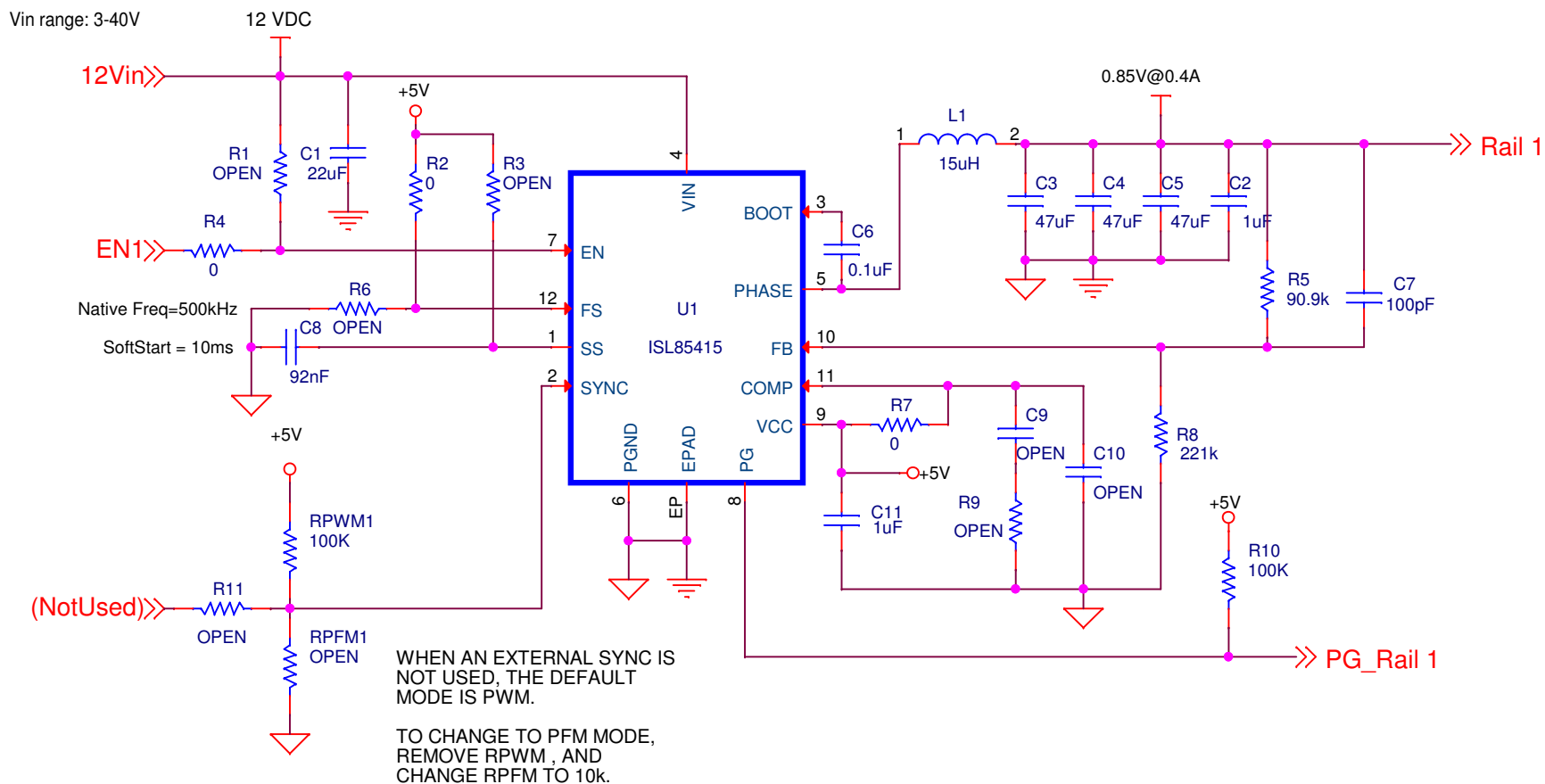


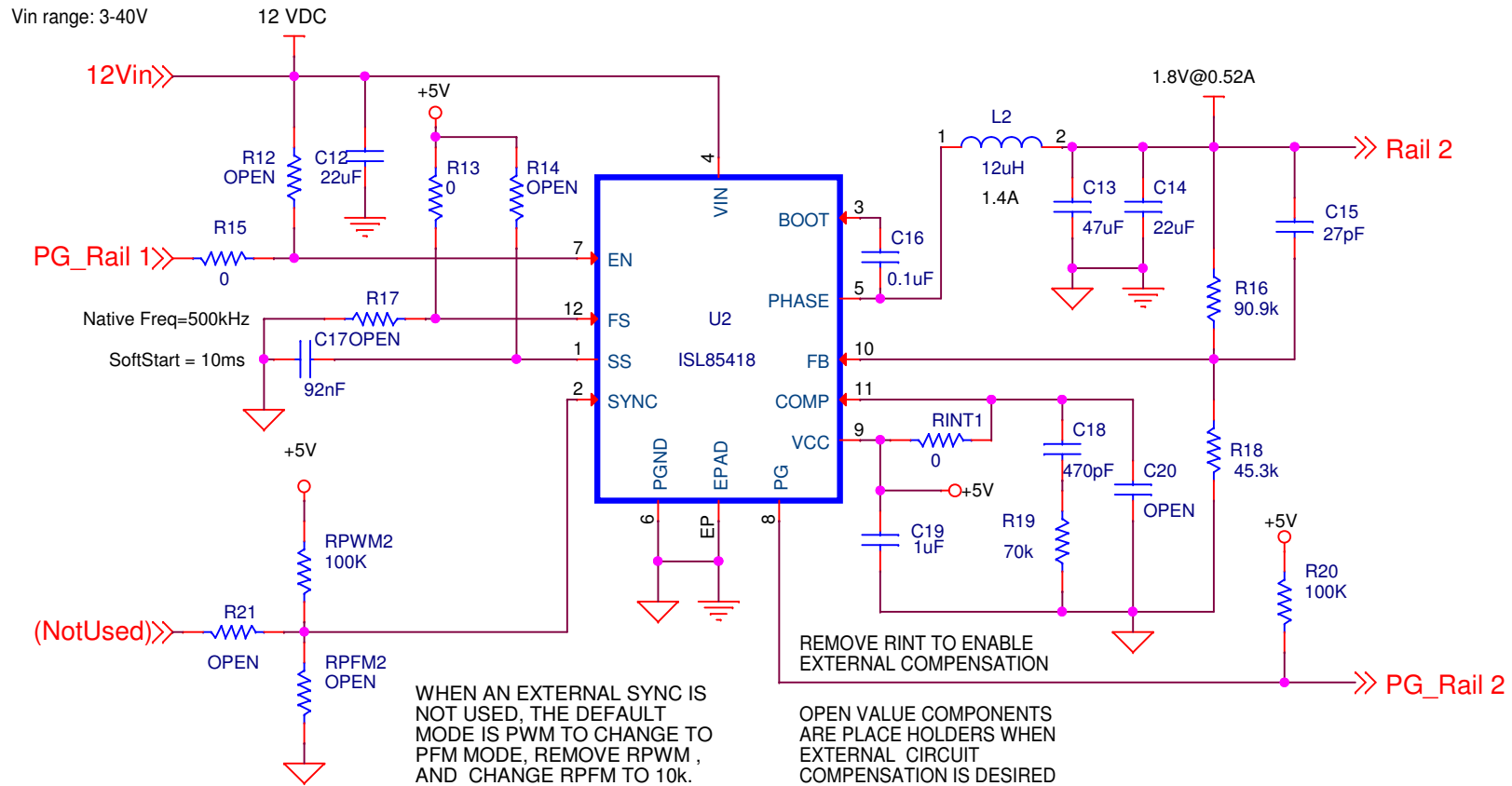
ISL85415 SINGLE OUTPUT (500mA)



Title		
ISL85415-SINGLE-1		
Size	Document Number	Rev
A		

Date: Thursday, March 09, 2017 Sheet 2 of 17

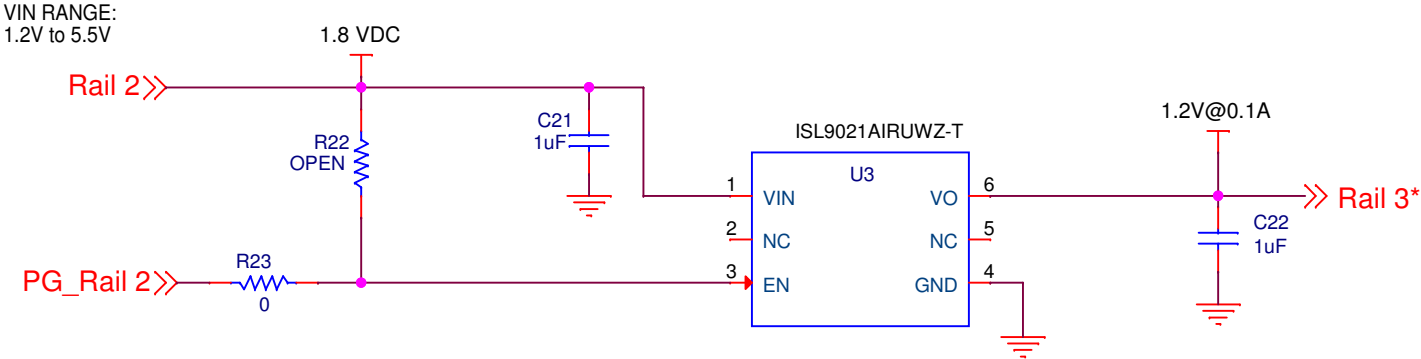
ISL85418 SINGLE OUTPUT (800mA)



Title		
ISL85418-SINGLE-1		
Size A	Document Number	Rev

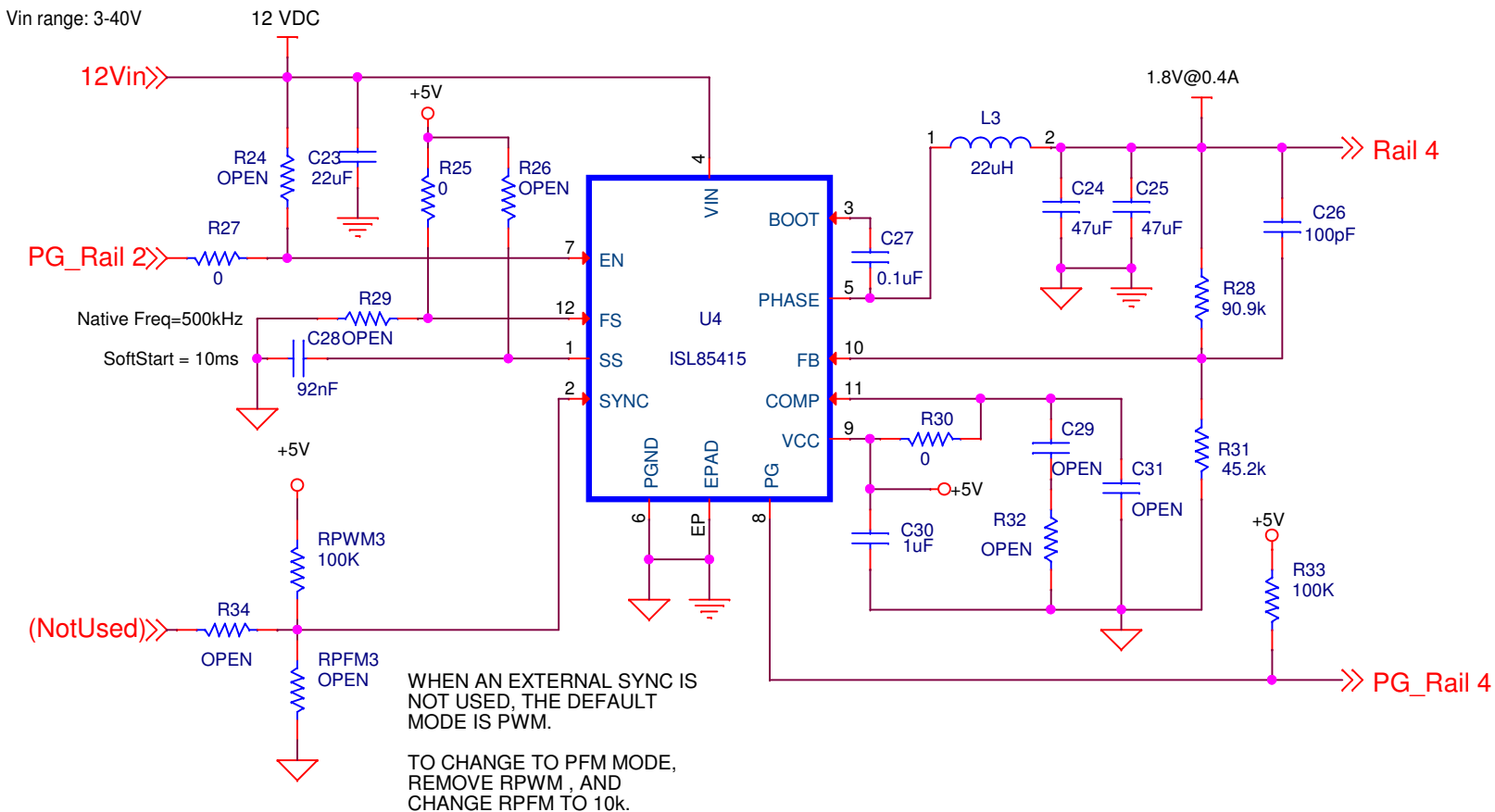
Date: Thursday, March 09, 2017 Sheet 3 of 17

ISL9021A Single Output (250mA)



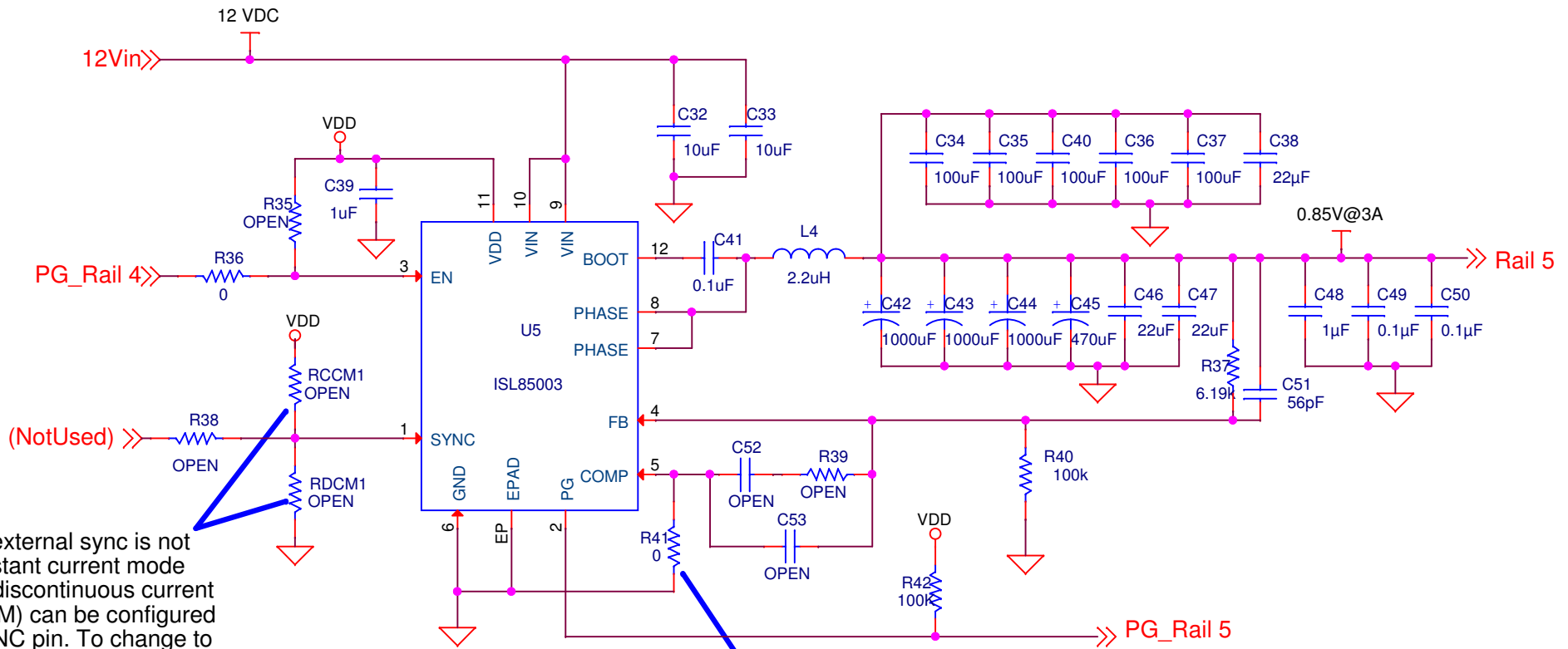
Title		
ISL9021A-SINGLE-1		
Size A	Document Number	Rev
Date:	Sheet 4 of 17	

ISL85415 SINGLE OUTPUT (500mA)



Title ISL85415-SINGLE-1			
Size A	Document Number		Rev
Date:	Thursday, March 09, 2017	Sheet	5 of 17

ISL85003 SINGLE OUTPUT (3A)



When an external sync is not used, constant current mode (CCM) or discontinuous current mode (DCM) can be configured on the SYNC pin. To change to DCM mode, remove RCCM, and change RDCM to 0 ohms.

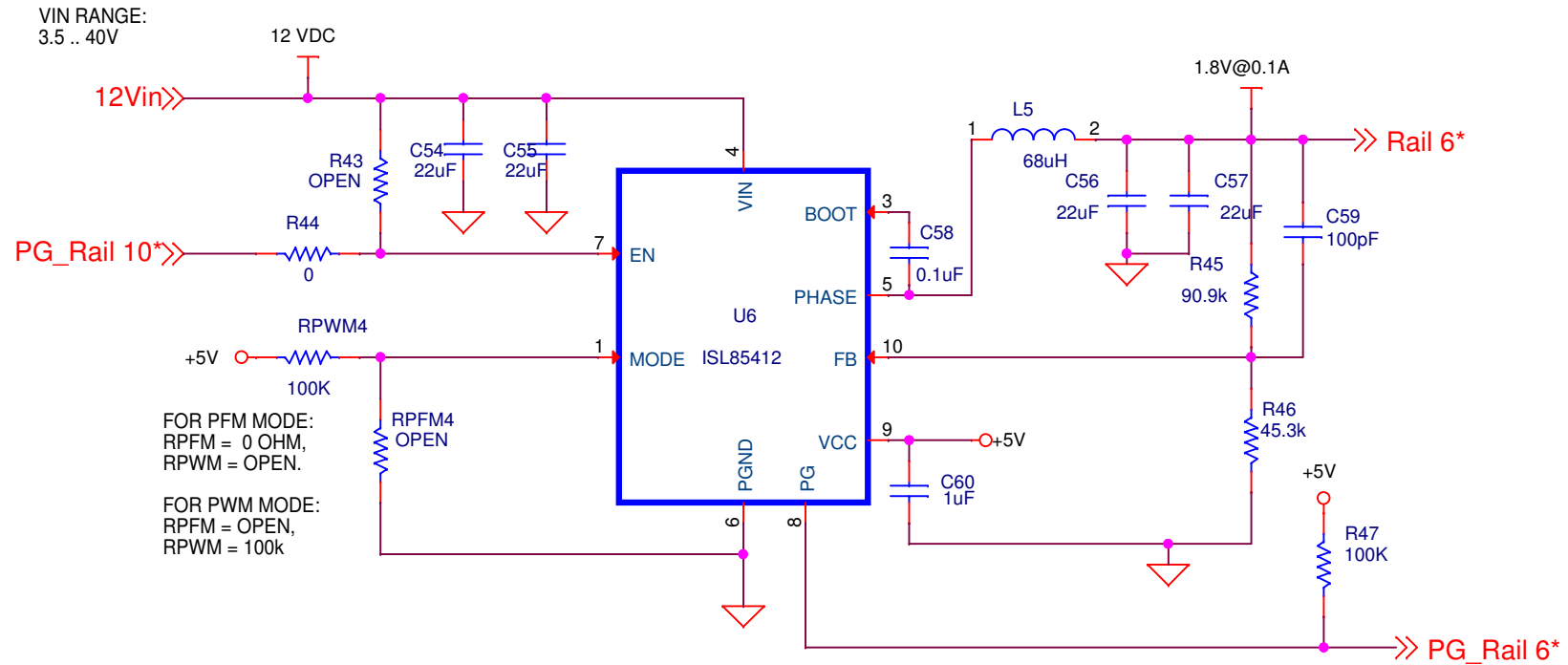
If custom compensation is desired, remove the ground connection on the COMP pin to enable external compensation.

OPEN value components on the COMP pin are place holders if external compensation is used.

Programmable Soft Start is available in the ISL85003A (without synchronization)

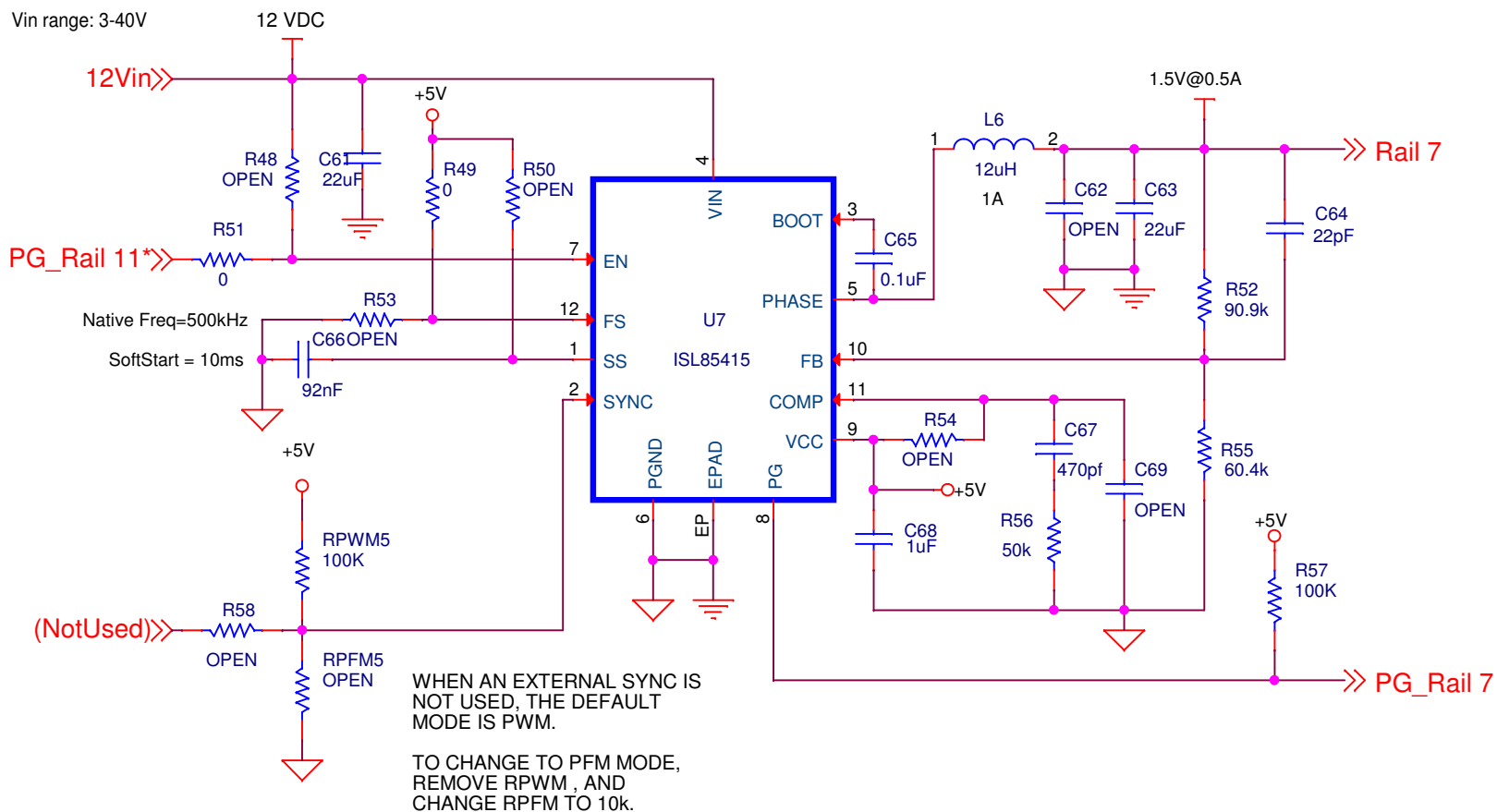
Title		
ISL85003-SINGLE-1		
Size	Document Number	Rev
A	<Doc>	<RevCo
Date:	Friday, February 05, 2021	Sheet 6 of 17

ISL85412 SINGLE OUTPUT (150mA)



Title			ISL85412-SINGLE-1		
Size	Document Number				Rev
A	<Doc>				
Date:	Thursday, March 09, 2017		Sheet	7	of 17
	2			1	

ISL85415 SINGLE OUTPUT (500mA)



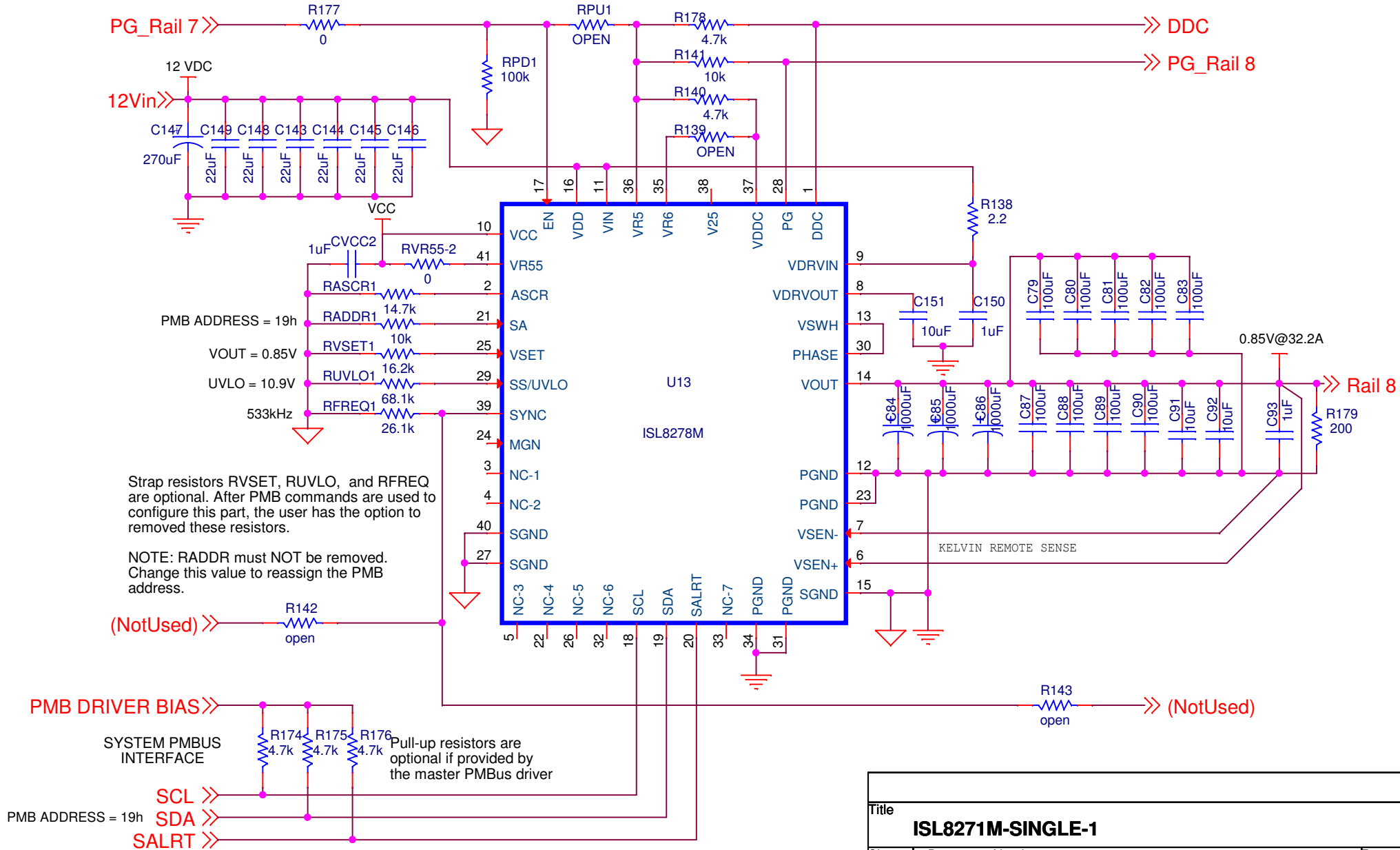
Title		
ISL85415-SINGLE-1		
Size A	Document Number	Rev

Date: Thursday, March 09, 2017 Sheet 8 of 17

ISL8278M SINGLE OUTPUT (33A)

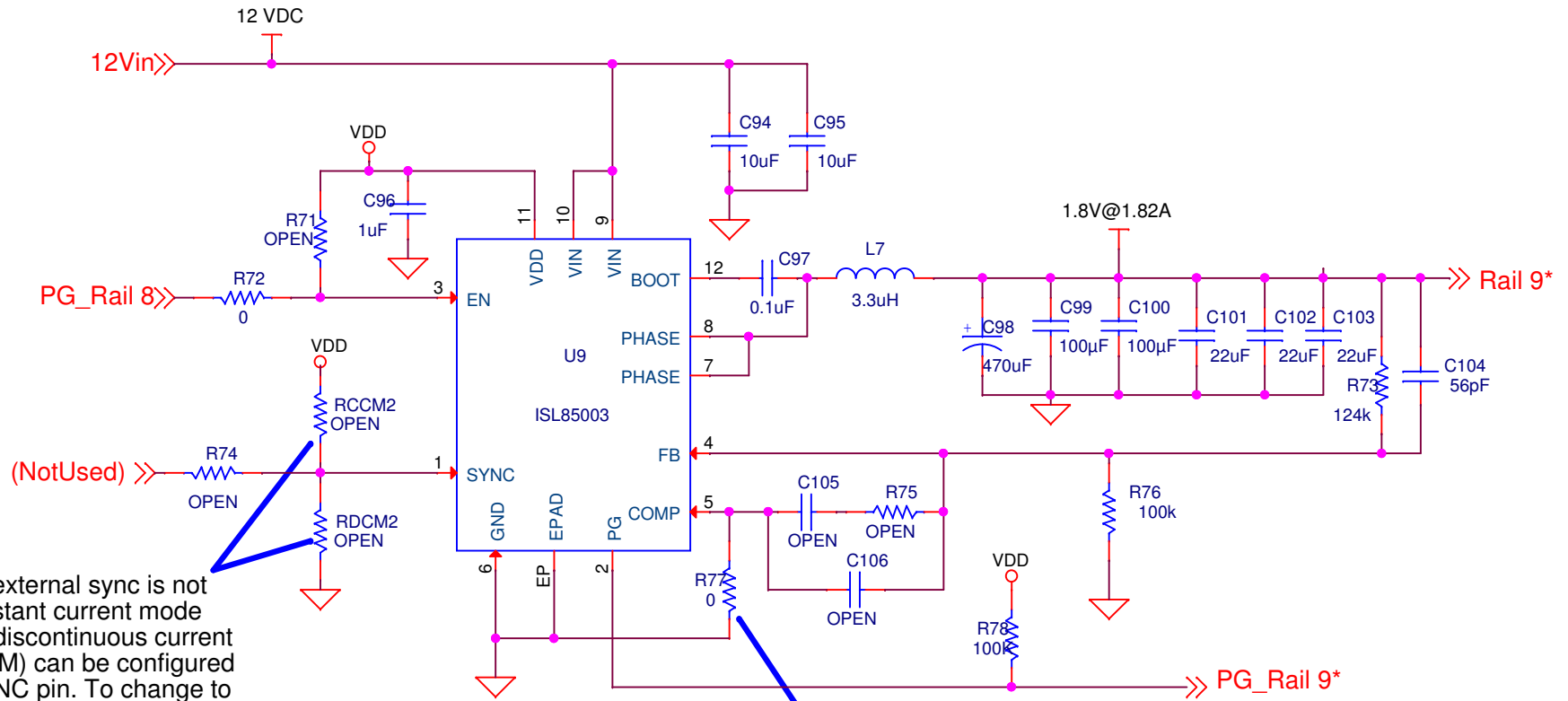
If an external ENABLE is not used, resistor RPU is a Enable pullup for initial evaluation without PMB commands.

Remove RPU and install RPD = 100k to make EN low to allow the use of PMB commands.



Title		
ISL8271M-SINGLE-1		
Size	Document Number	Rev
A		
Date:	Sheet	9 of 17

ISL85003 SINGLE OUTPUT (3A)



When an external sync is not used, constant current mode (CCM) or discontinuous current mode (DCM) can be configured on the SYNC pin. To change to DCM mode, remove RCCM, and change RDCM to 0 ohms.

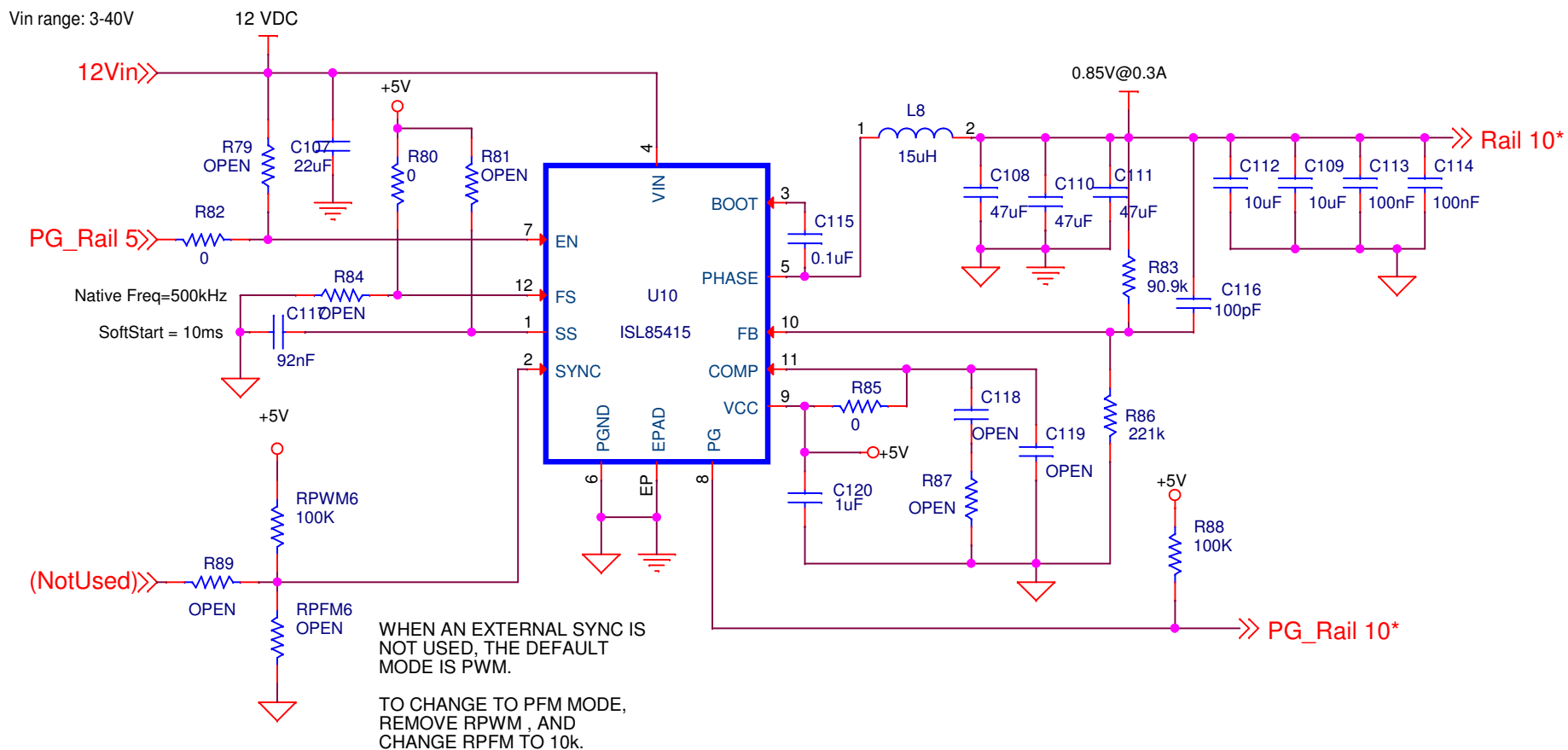
If custom compensation is desired, remove the ground connection on the COMP pin to enable external compensation.

OPEN value components on the COMP pin are place holders if external compensation is used.

Programmable Soft Start is available in the ISL85003A (without synchronization)

Title		
ISL85003-SINGLE-1		
Size	Document Number	Rev
A	<Doc>	<Rev Co
Date:	Thursday, March 09, 2017	Sheet 10 of 17

ISL85415 SINGLE OUTPUT (500mA)



Title		
ISL85415-SINGLE-1		
Size	Document Number	Rev
A		

Date: Thursday, March 09, 2017 Sheet 11 of 17

17

3

D

C

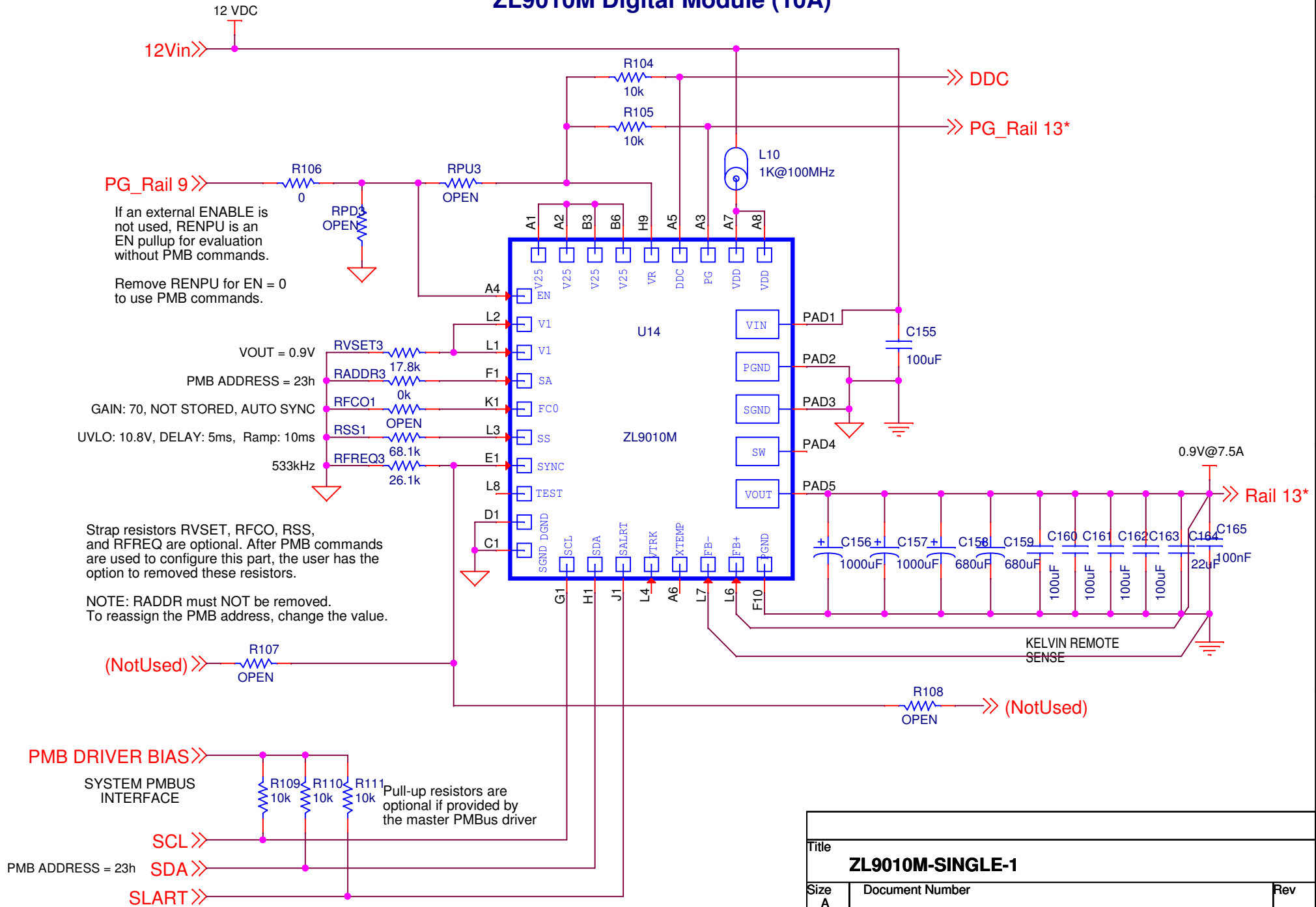


A

1

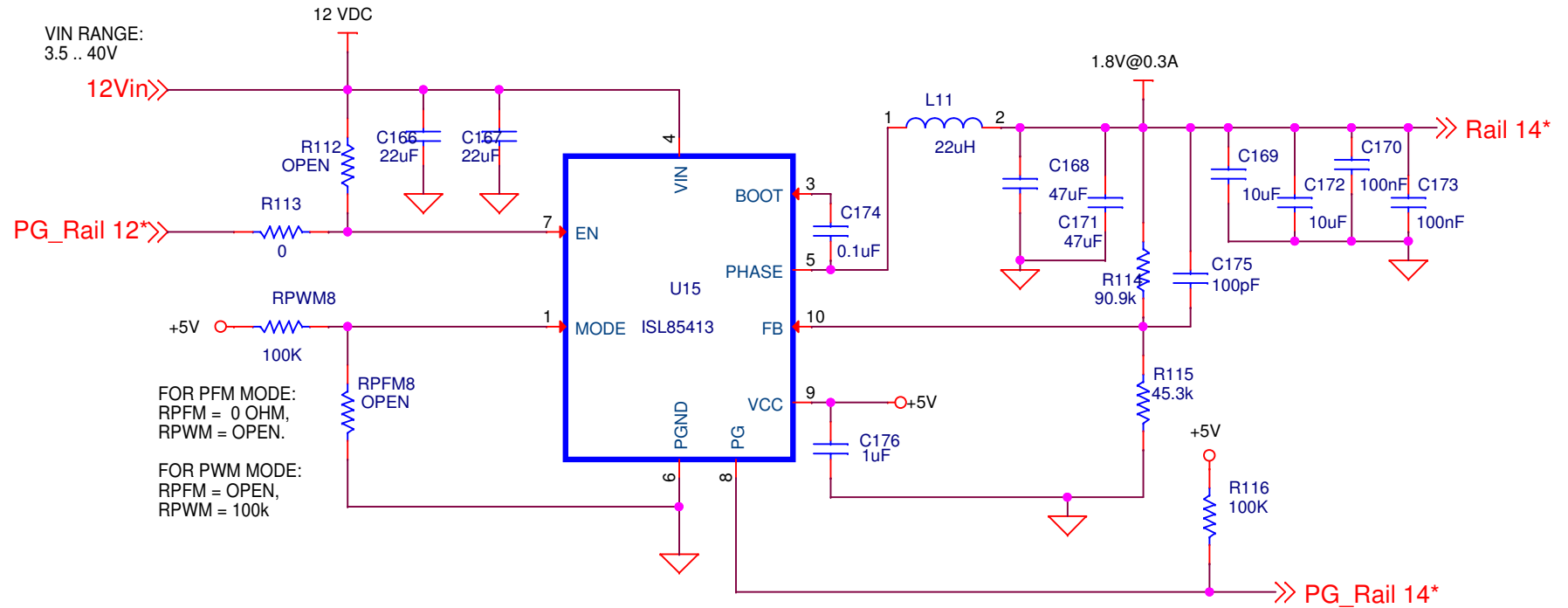
1

ZL9010M Digital Module (10A)



Title		
ZL9010M-SINGLE-1		
Size	Document Number	Rev
A		
Date:	Sheet	14 of 17

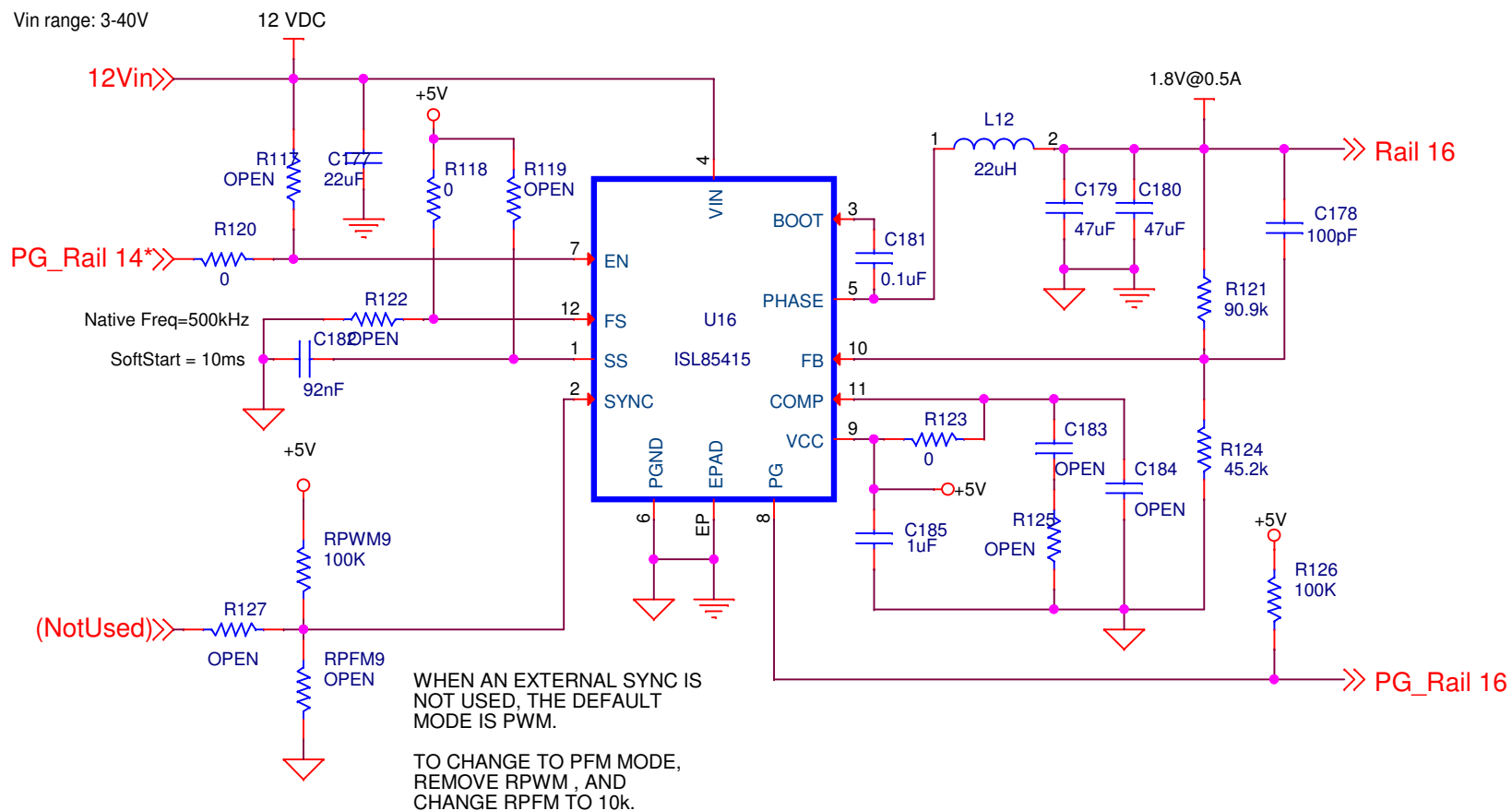
ISL85413 SINGLE OUTPUT (300mA)



Title		
ISL85413-SINGLE-1		
Size	Document Number	Rev
A	<Doc>	

Date: Thursday, March 09, 2017 Sheet 15 of 17

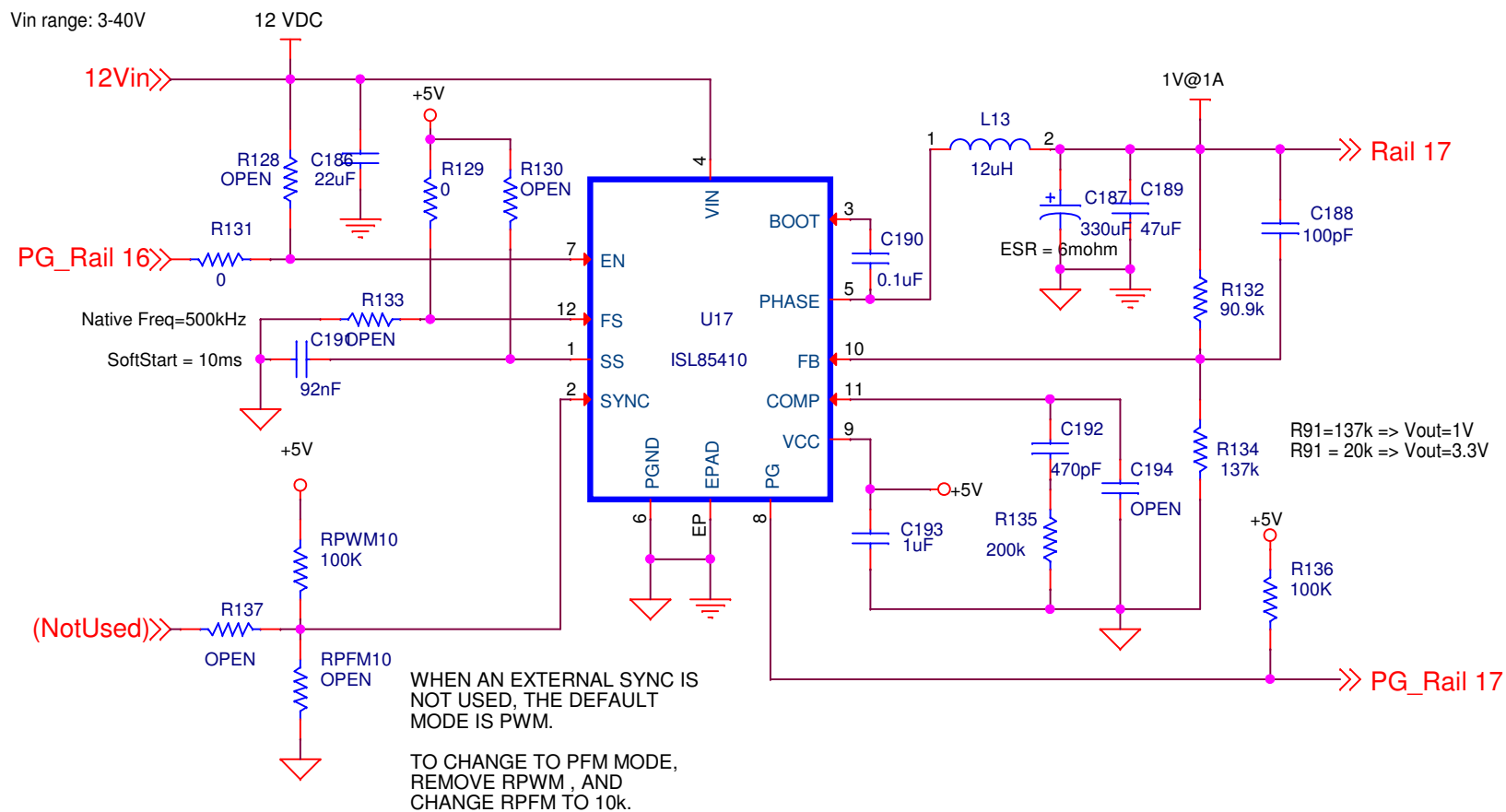
ISL85415 SINGLE OUTPUT (500mA)



Title		
ISL85415-SINGLE-1		
Size A	Document Number	Rev

Date: Thursday, March 09, 2017 Sheet 16 of 17

ISL85410 SINGLE OUTPUT (1A)



Title		
ISL85410-SINGLE-1		
Size A	Document Number	Rev

Date: Tuesday, March 14, 2017 Sheet 17 of 17